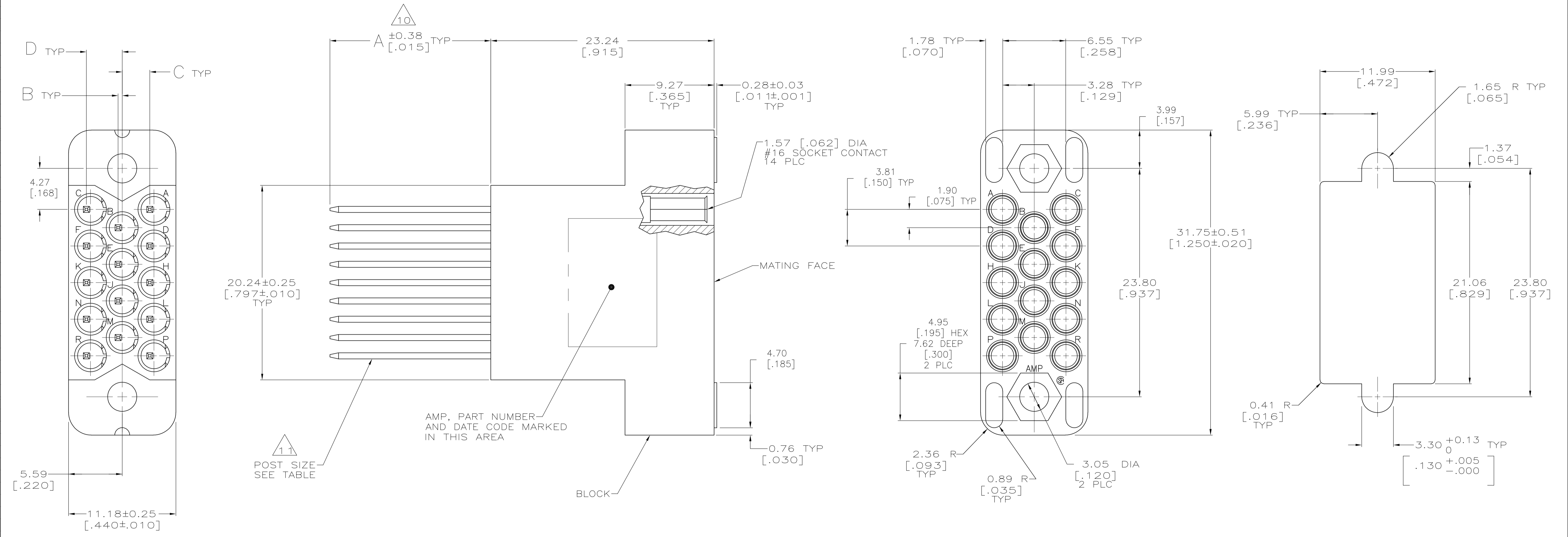


LOC		DIST		REVISIONS			
F	LTR	DESCRIPTION	DATE	DWN	APVD		
R		REVISED PER ECO-07-010240	5/3/07	SS	GS		



- △ PHENOLIC, BLACK.
- △ BODY: BRASS, MIL-C-50; POST: BRASS, ASTM B-134; SPRING: STAINLESS STEEL, QQ-5-766.
- △ BODY AND POST: BRASS, ASTM B-36; SPRING: STAINLESS STEEL, QQ-5-766.
- △ GOLD PER MIL-G-45204, NICKEL PER QQ-N-290, TIN-LEAD PER MIL-T-10727 AND COPPER PER MIL-C-14550.
- △ 1.27um [.000050] MIN TIN-LEAD OVER 1.27um [.000050] MIN NICKEL.
- △ 0.76um [.000030] MIN GOLD OVER 1.27um [.000050] MIN NICKEL.
- △ 0.76um [.000030] MIN GOLD ON MATING END FOR A LENGTH OF 5.08 [.200] MIN, GOLD FLASH ON THE REMAINDER OVER 1.27um [.000050] MIN NICKEL.
- △ 2.54um [.000100] MIN TIN-LEAD OVER 2.54um [.000100] MIN COPPER.
- △ 2.54um [.000100] MIN TIN-LEAD OVER 1.27um [.000050] MIN NICKEL.
- △ 10 WHEN CONTACT IS FULLY SEATED FORWARD.
- △ 11 CONTACTS ARE SEMI-AUTOMATICALLY WIRABLE.
- 12. MAX WIRE TO BE USED WITH THIS CONNECTOR IS NO. 24 AWG.
- △ 13 2.54um [.000100] MIN TIN OVER 1.27um [.000050] MIN NICKEL.

3.73 [.147]	2.87 [.113]	0.43 [.017]	6.63 [.261]	△13	△7	△2	0.64 X 0.64 [.025 X .025]	1	3-205508-4
3.73 [.147]	2.87 [.113]	0.43 [.017]	6.63 [.261]	△8	△7	△2	0.64 X 0.64 [.025 X .025]	1	3-205508-1
3.30 [.130]	3.30 [.130]	0 [.000]	20.57 [.810]	△9	△6	△3	0.79 X 1.57 [.031 X .062]	3	205508-8
3.73 [.147]	2.87 [.113]	0.43 [.017]	16.74 [.659]	△8	△5	△2	0.64 X 0.64 [.025 X .025]	3	205508-3
D	C	B	A	FINISH CONTACT POST	FINISH CONTACT BODY	MATERIAL CONTACT	CONTACT POST SIZE	NO OF TERM	PART NUMBER

OBSOLETE

THIS DRAWING IS A CONTROLLED DOCUMENT

DWG: D.GELTZ	04/20/94		Tyco Electronics Corporation
CHK: R.STONE	04/25/94		Harrisburg, Pa 17105-3608
DIMENSIONS: mm [INCHES]	TOLERANCES UNLESS OTHERWISE SPECIFIED:	PRODUCT SPEC	NAME
0 PLC ± -	1 PLC ± -	APPLICATION SPEC	SIZE
2 PLC ± 0.13 [.005]	3 PLC ± -	WEIGHT	CAGE CODE
4 PLC ± -	ANGLES ± -	CUSTOMER DRAWING	DRAWING NO
MATERIAL BLOCK: △	FINISH CONTACT: SEE TABLE	SCALE: 5:1	A1 00779C=205508
CONTACT: SEE TABLE		SHEET 1 OF 1	REV R